

Colours illustrated in this guide are samples from our colour library and are for guidance only. Please request a sample for accurate colour representation.

To discuss your project or arrange a sample please contact:

Telephone: 0208 816 8160
Email: info@surfaceform.com
Website: www.surfaceform.com

Head Office

A19 Kilcronagh Business Park,
Cookstown, Co.Tyrone, BT80 9HJ

Overview

Classic Polished Plaster

Classic Polished Plaster is finished with a high reflective sheen similar to marble offering a sense of depth with natural shade variations while being smooth to touch. Suitable for interior decoration normally associated with focal points or feature walls. Background movements and shade variation are a normal part of this finish.

Marmorino Polished Plaster

Marmorino Polished Plaster finish has a semi-shine offering a sense of depth with some natural shade variations whilst being serene to the touch. It is possible to achieve a finish with little or no background movements, creating a luxurious feel to any space.

Stucco Polished Plaster

Stucco Polished Plaster is a wonderfully exquisite matt polished plaster with subtle shading. This sublime and refined product makes for one of our most renowned finishes.

Chamois Polished Plaster

This plaster offers a gentle texture with a fine suede like feel due to the microfibers in the material. Chamois has visible natural shading making it a very soft and elegant venetian plaster.

Pitted Polished Plaster

Pitted Polished Plaster is a stone-like effect finish that has a gentle pitted texture of varying degrees depending on grain size and client requirements. The unique characteristics of this plaster finish give it an inherent warmth and appeal.

Dragged Polished Plaster

Dragged Polished Plaster has the allure of natural stone, with a definitive direction to its texture. Ideally suited to natural earth tones, which can be enhanced with organic mineral washes giving it a very unique and warm quality.

Recommended Use

For high quality decoration on commercial and domestic buildings. Suitable for internal use only.

Colour

Select a standard colour from our colour chart or we can create almost any surface colour to match Ral, NCS or Pantone colours. Colour matching is available on request. Contact us for more information.

Application

Applied and finished using hand held tools such as trowels, spatulas, brushes and rollers. 3 - 5 coats depending on desired finish. Installation at temperatures between 10°C - 30°C.

Substrate

Download our Substrate guidelines at www.surfaceform.com

Specification

Download our Specification document at www.surfaceform.com

Programme

Finish is applied on site as late in the build as possible and may need to be protected during the completion of the project. Drying times will vary with site conditions.

Installation

By Surfaceform.

Polished
Plaster

Textures
Colours

Smooth Polished Plaster



Classic Polished Plaster



Marmorino Polished Plaster



Stucco Polished Plaster

Textured Polished Plaster



Chamois Polished Plaster



Pitted Polished Plaster



Dragged Polished Plaster

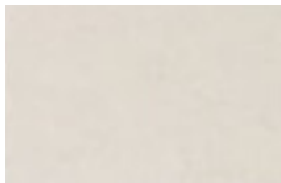
Please see overleaf for further information



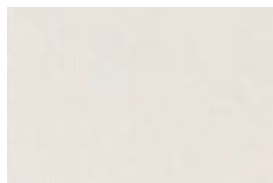
Pure Natural White



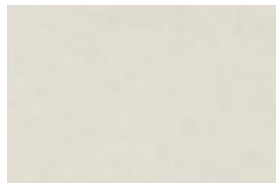
Pearl White



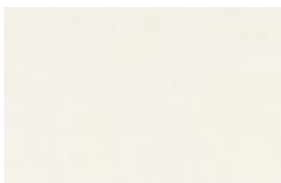
Polar White



Linen White



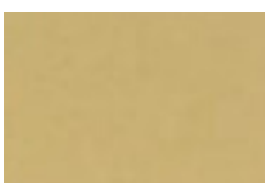
Arctic White



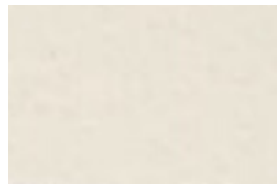
Grey White



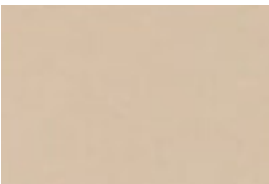
Stone Grey



Pale Gold



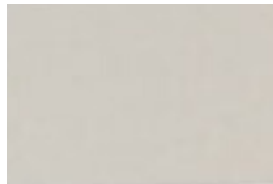
Off White



Navajo White



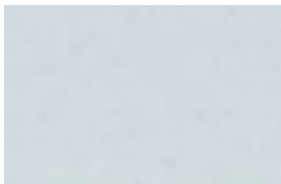
Cappucino



Nude



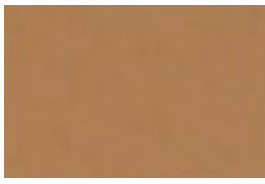
Cotton White



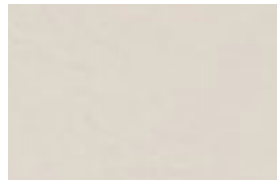
Ice Blue



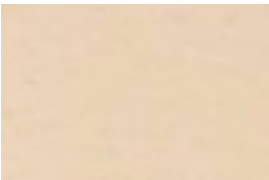
Pewter



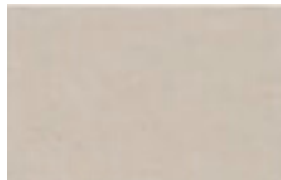
Terracota



Cottage White



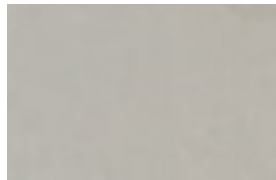
Pearl Cream



Taupe White



Rose White



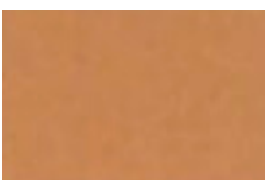
Light Warm Grey



Dark Blue



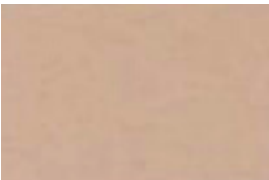
Light Pewter



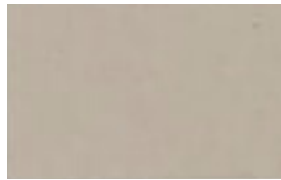
Cinamon Orange



Antique White



Blush White



Porcelain



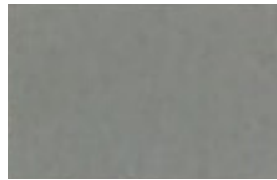
French Grey



Mid Warm Grey



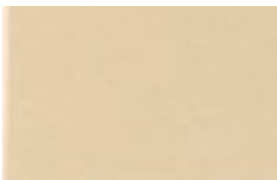
Night Blue



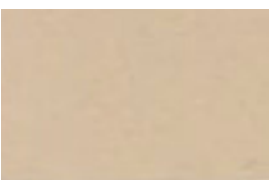
Platinum Grey



Tangerine Orange



Sand



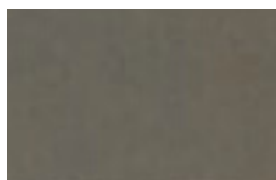
Eggshell Cream



Olive Grey



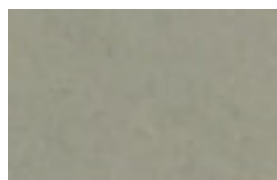
Putty



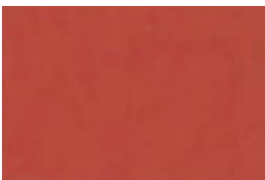
Dark Warm Grey



Light Cool Grey



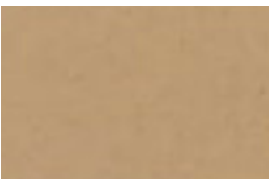
Sage Green



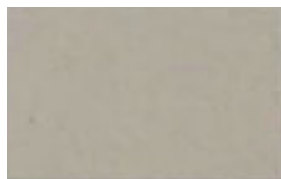
Vermillion Red



Oatcake



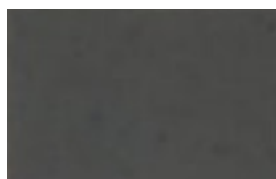
Chablis Cream



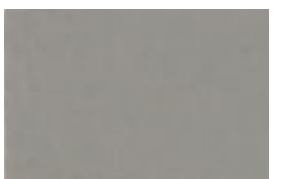
Green Clay



Elephant



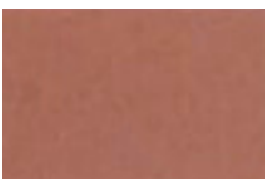
Charcoal Grey



Mid Cool Grey



Green Earth



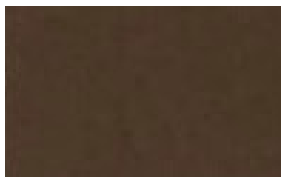
Saffron Red



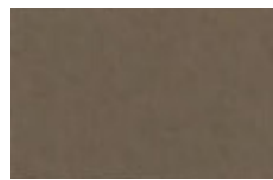
Cord



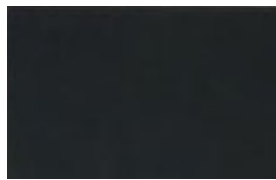
Brown Leather



Earth Brown



Khaki



Black



Dark Cool Grey



Sea Green



Copper Red